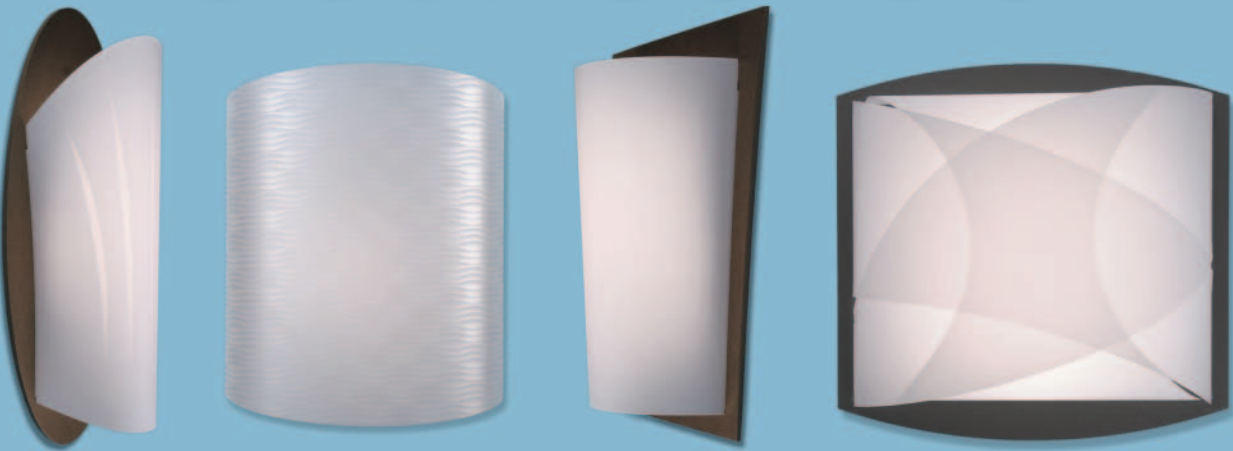




Flat Pack Sconce Series



RLR - HOP
Custom Specialties

flat pack scone series

PRODUCT BRIEF

The Flat Pack Sconce Series of component solutions can be utilized in the following applications to produce a cost effective wall sconce which can be aesthetically attractive and extremely economical:

- Office Facility Hallways and Conference Rooms
- Interior Hallways of Single and Multi-unit family dwellings
- Residential Applications
- Hotel and Hospitality Installations
- Assisted Living Installations

The set utilizes GU24 CFL lamp technology to allow for an extremely simple, yet high-value wall sconce luminaire.

Flat Pack Sconce Set Features:

Fixture Wall Plate – Powder coated stamped steel for maximum light reflectivity. Ground Wire and Screw provided.

Lamp Riser – Precisely engineered lamp bracket to accommodate GU24 lampholder.

Lampholder - UL Listed GU24 Lampholder with Fiberglass Insulation installed.

Lens and Trim Options – Single Layer White, Double-Layer Patterned, and paper/fabric applique lenses are available. Back trims are available in a variety of color choices.

Knockdown Assembly – Units can be shipped out in an extremely economic package to distributors or installation sites. The OEM opens the packaging, applies certification label (UL, CSA, etc.), adds any additional OEM specific hardware or documentation, and the box is re-sealed for shipment.

PACKAGING

RLR-HOP has developed a unique Flat Pack packaging design which allows the OEM to ship a complete sconce luminaire in an extremely shallow package. An entire wall sconce job can be shipped out on a minimal amount of pallets, or easily be palletized with other luminaire shipments with a minimal effect on the cube of the shipment.



Step 1: Open single packed Flat Pack Sconce as received from RLR-HOP.



Step 2: Remove decorative trim plate. OEM applies certification label to wall plate and adds any additional hardware or instruction sheets desired



Step 3: Replace decorative trim plate in pack.



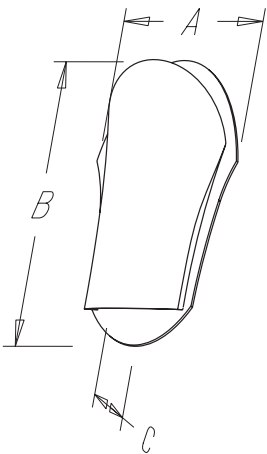
Step 4: Seal & label carton per OEM specification.

flat pack sconce series

SCONCE MODELS

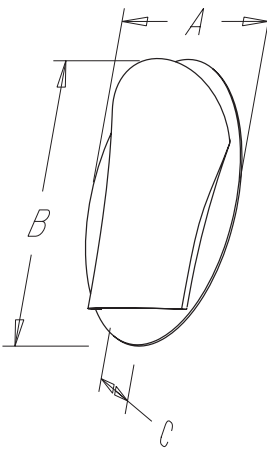
Trumpet

DLPTO Pattern on Lens



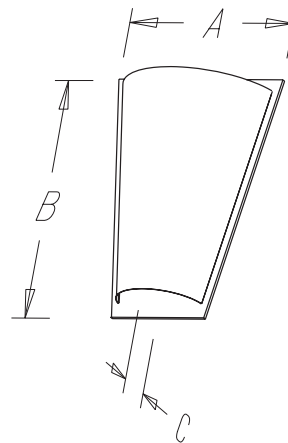
Oval

WAV Pattern on Lens



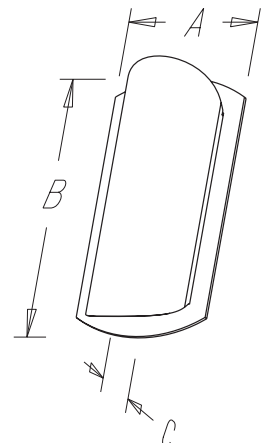
Trapezoid

SL Style Lens



Curved Ends

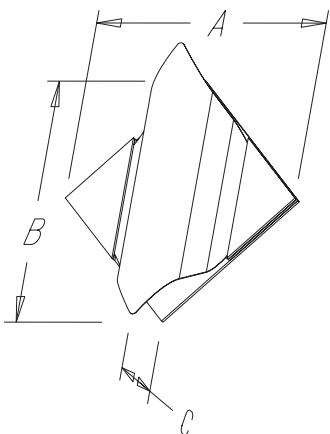
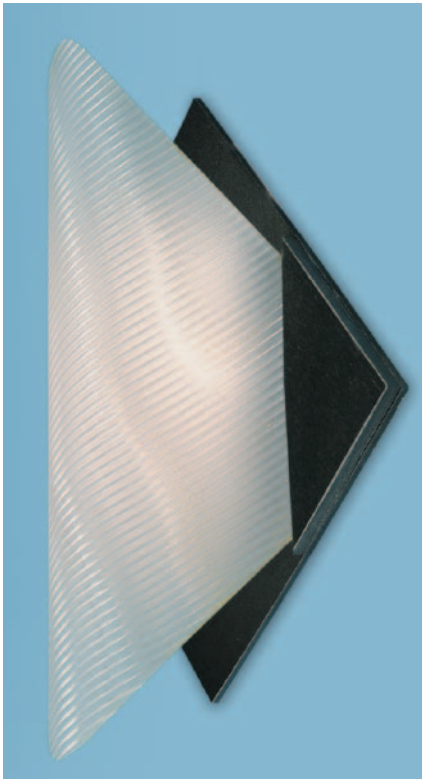
DLPTC Pattern on Lens



flat pack sconce series

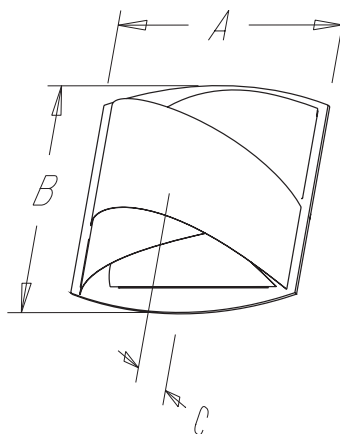
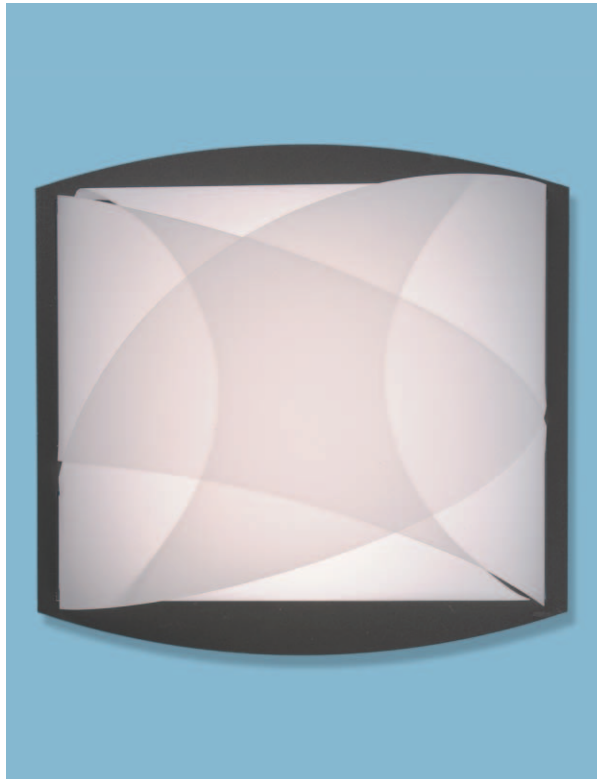
Diamond

WAV Pattern on Lens



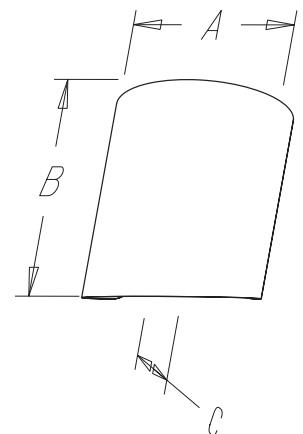
Contemporary

SL Style Lens



Seamless

WAV Pattern on Lens



SPECIFICATIONS

Series	Model	Plate Color	Lens Style	Lens Color/Finish (SLF, SLP only)
FPSC	1 - Trumpet 2 - Oval 3 - Trapezoid 4 - Curved Ends 5 - Diamond 6 - Contemporary 7 - Seamless	010 - Brushed Nickel 104 - Bronze 120 - Mahogany CS - Clear Sanded NT - No Trim (Seamless Model Only)	SL - Single Layer White Flex DLPTO - Trumpet/Oval Double Layer Flex- Glass Blade DLPTC - Trapezoid/Curved End Double Layer Flex - Bubbles DLPS - Seamless Double Layer Flex - Ovals WAV - Wave Pattern w/Flex LENT - Lenticular Pattern w/Flex SLF - Single Layer w/fabric SLP - Single Layer w/paper SLLR - Single Layer w/Louver Resin	502 - Laminated white grid 510 - Laminated lace window pane 512 - Laminated stonehenge 513 - Laminated tan scroll 450 - Bronze mesh 552 - Laminated umbria slate 553 - Laminated russell square 555 - Laminated concord white linen 556 - Laminated chocolate linen 557 - Laminated vermicelli
***DLP patterns on trumpet, oval - glass blade pattern ***DLP patterns on trapezoid, curved ends - round bubbles ***DLP pattern on seamless - ovals		Packed with assembled GU24 plate Packed with sheathed lampholder Packed with basic screw/wire nut bag part Packed in single pack carton Lamp Not Included		

FPSC DIMENSIONS

Model #	Dim 'A'	Dim 'B'	Dim 'C'
FPSC-1	8.36"	16.25"	3.90"
FPSC-2	8.75"	16.25"	3.90"
FPSC-3	9.00"	12.50"	3.96"
FPSC-4	7.31"	14.06"	3.58"
FPSC-5	14.14"	15.90"	3.94"
FPSC-6	12.00"	11.56"	4.00"
FPSC-7	9.45"	11.25"	3.94"

ORDERING INFORMATION

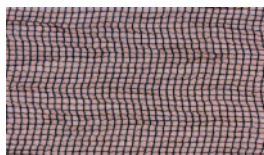
Example:

FPSC-2-104-SL, Flat Pack Sconce, Oval, Bronze Trim Finish, with Single Layer Flex Diffuser

All Flat Pack Sconce
Series Models
are ADA Compliant



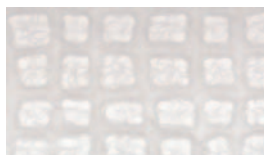
LENS COLORS / FINISHES



450 - Bronze mesh



502 - Laminated white grid



510 - Laminated lace window pane



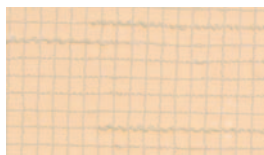
512 - Laminated stonehenge



513 - Laminated tan scroll



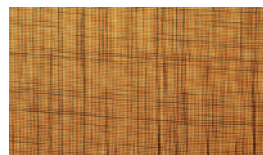
552 - Laminated umbria slate



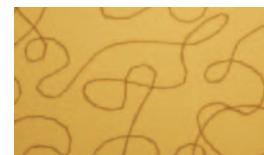
553 - Laminated russell square



555 - Laminated concord white linen



556 - Laminated chocolate linen

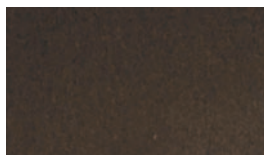


557 - Laminated vermicelli

PLATE COLORS



010 - Brushed Nickel



104 - Bronze



120 - Mahogany



CS - Clear Sanded



NT - No Trim - Seamless Model Only

RLR-HOP Custom Specialties, a division of RLR Industries, Inc.



Since 1957, RLR Industries, Inc. has been manufacturing plastic lenses and diffusers for the lighting industry. In addition, the firm has performed custom forming and fabrication services for many diverse industries.

Over the years, our capabilities have expanded from our core capabilities of thermoforming and fabricating plastic sheet products to injection molding, CNC fabrication and flat sheet extrusion.

Our modern 100,000 square foot facility in Mableton, Georgia contains state of the art plastics processing equipment. Our commitment to manufacturing demands that we constantly research and implement the latest cost effective technologies in our manufacturing operation.

RLR maintains an in house tooling staff to produce our vacuum and pressure forming tooling, as well as all associated fabrication jigs and fixtures. We also maintain our injection molds in house. We have the ability to source high quality injection molds through a time-tested network of tooling suppliers.

RLR maintains a stock tooling list, as well as performing custom product development and production for lighting OEMs. All proprietary OEM work is held on a confidential basis for our customers.

We have stocking warehouses in strategic areas of the United States and maintains a just-in-time service on our stock items for our customers from our Mableton, GA facility. In addition, RLR maintains just-in-time stock for custom products on a contract basis for our customers.

The Mableton, Georgia facility is conveniently located 20 minutes from Atlanta's Hartsfield International Airport and is within 5 minutes from major interstate routes. We welcome our customers to visit us at your convenience to discuss your custom plastic requirements.

Privately held, the Lewis family, now in their second generation of serving the lighting industry, is dedicated to continue to serve your thermoforming, injection molding, and fabrication needs.



575 Discovery Place, Mableton GA 30126
Phone: 770.948.6069 • Fax: 770.948.1389
Sales Inquiries: sales@rlr-hop.com • Web: www.rrl-hop.com

*Dimensions and specifications
contained in this brochure are
subject to change without notice.*