



RLR
INDUSTRIES INC

LEDP PUFF SERIES

LED LOW PROFILE PUFF DIFFUSERS

LEDP PUFF

A Modern Cloud for Modern Technology- the LEDP Low Profile Puff series of diffusers are designed to be used with LED Multi-Chip Linear Arrays. The low profile design achieves a contemporary neutral standard design motif. Excellent LED pixel obscuration is achieved by utilizing a custom engineered Acrylic/Impact blend resin formula.

Typical installations include Residential, Light Commercial, Multi-family, and Hospitality applications.

The product line is available to OEM's as a diffuser component, or as a complete wired turn-key fixture set.

In addition, companion unwired housings are available for OEM's who wish to wire fixtures without fabricating their own metal componentry in their facilities.

Ordering Information

Diffuser Component

Example: LEDP14	1 x 4 LED Puff Diffuser
Base Part Number	LEDP
Size	14 (nominal 1' x 4')
	12 (nominal 1' x 2')

Unwired Housing Component

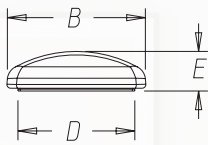
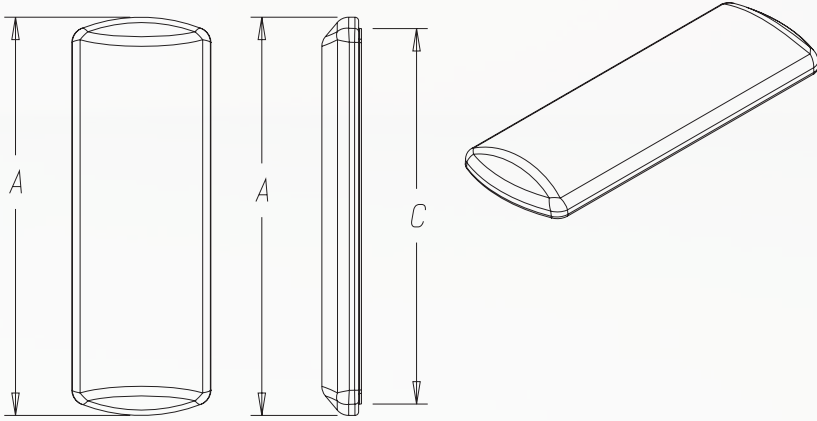
LEDP14-HSG-RES	1' x 4' LED Puff Housing
LEDP12-HSG-RES	1' x 2' LED Puff Housing

Housings include: chassis, driver cover, junction box cover, and associated hardware/fasteners

Turn-key complete fixture

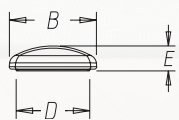
Example: LEDP143KR	1 x 4 LED Puff Complete Fixture, 3000K, Residential Driver
Base Part Number	LEDP
Size	14 (nominal 1' x 4')
	12 (nominal 1' x 2')
LED Color Temperature:	3K 3000K
	4K 4000K
Driver	R residential (120V, triac dimming)
	C commercial (universal 120-277V, 0-10 volt dimming)

Photometric reports, ETL Listing information, and componentry/construction details can be provided upon request.



LEDP12

A	B	C	D	E
26.67"	9.28"	24.97"	7.65"	2.65"



LEDP14

A	B	C	D	E
49.67"	9.28"	47.97"	7.65"	2.65"



RLR Industries, Inc.

Since 1957, RLR Industries, Inc. has been manufacturing plastic lenses and diffusers for the lighting industry. In addition, the firm has performed custom forming and fabrication services for many diverse industries.

Over the years, our capabilities have expanded from our core capabilities of thermoforming and fabricating plastic sheet products to injection molding, CNC fabrication and flat sheet extrusion.

Our modern 100,000 square foot facility in Mableton, Georgia contains state of the art plastics processing equipment. Our commitment to manufacturing demands that we constantly research and implement the latest cost effective technologies in our manufacturing operation.

RLR maintains an in house tooling staff to produce our vacuum and pressure forming tooling, as well as all associated fabrication jigs and fixtures. We also maintain our injection molds in house. We have the ability to source high quality injection molds through a time-tested network of tooling suppliers.

RLR maintains a stock tooling list, as well as performing custom product development and production for lighting OEMs. All proprietary OEM work is held on a confidential basis for our customers.

We have stocking warehouses in strategic areas of the United States and maintains a just-in-time service on our stock items for our customers from our Mableton, GA facility. In addition, RLR maintains just-in-time stock for custom products on a contract basis for our customers.

The Mableton, Georgia facility is conveniently located 20 minutes from Atlanta's Hartsfield International Airport and is within 5 minutes from major interstate routes. We welcome our customers to visit us at your convenience to discuss your custom plastic requirements.

Privately held, the Lewis family, now in their second generation of serving the lighting industry, is dedicated to continue to serve your thermoforming, injection molding, and fabrication needs.



575 Discovery Place • Mableton, GA 30126 • 770.948.6069

www.rlrindinc.com